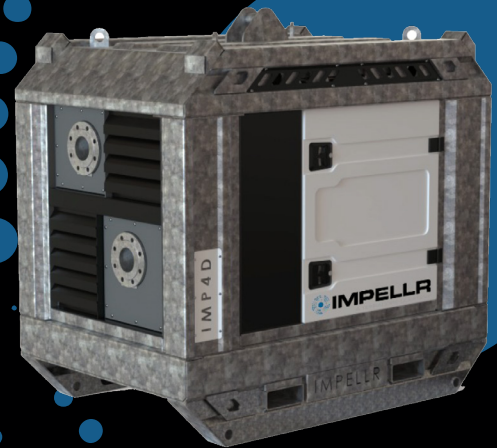


DRY-PRIMING 4" SURFACE PUMP - IMP4D-11-CH

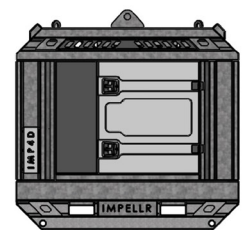
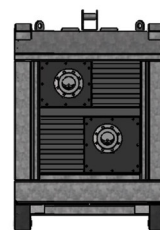
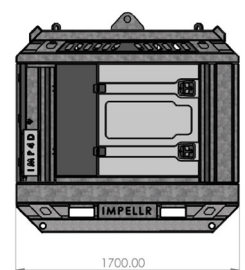
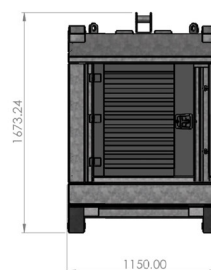
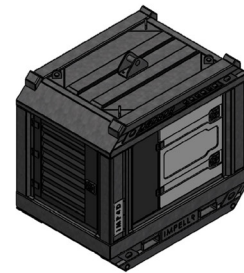


FLOW @ BEP: 156 M3/HR | HEAD @ BEP: 12.4 M

The IMPELLR surface pumps are designed for heavy industrial site water dewatering with many features to make the rental of the equipment a success.

Ideal for construction, utilities, disasters, mining and quarrying where water need to be moved quickly.

- Full load lifting eyes and stacking frame for neat and compact storage.
- Heavy-duty galvanised frame that will protect the engine, pump, and controls in harsh environments.
- Diesel units fitted with Stage V engines that can run on ultra-low sulphur and standard diesel.
- Simple to use controls with remote monitoring options.



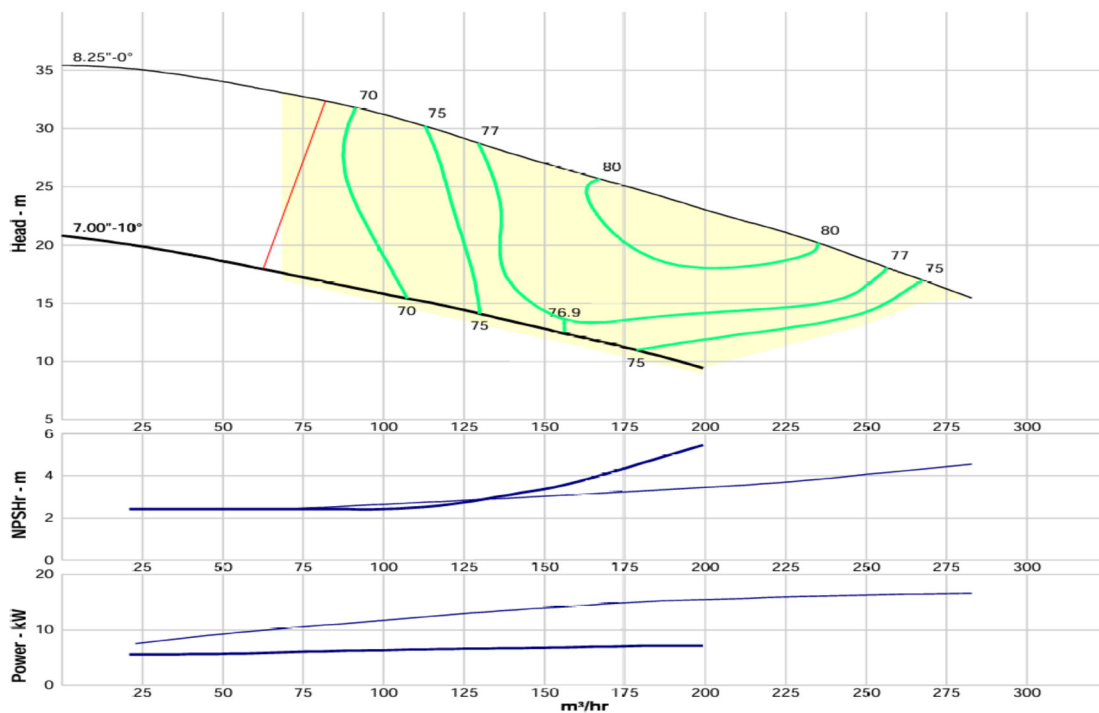
TECHNICAL DATASHEET

Pump specifications:

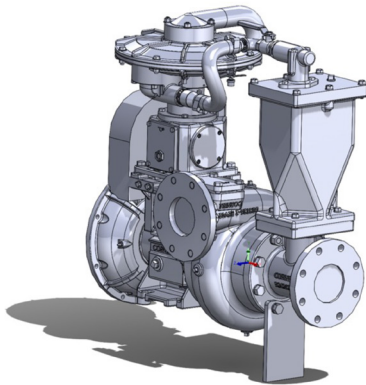
IMP4D-11-CH

Max Flow	200 m ³ /hr
Max Closed Head	20.8 mtrs
Max Operating Head	17.5 mtrs
Best Efficiency	77%
BEP Flow / Head	156 m ³ /hr / 12.4 m
Suction / Discharge	4" (DN100) / 4" (DN100)
Solids Handling	76 mm
Impeller Type	Channel
Speed	1200 – 2200 RPM
Motor / Engine	Hatz 1D90E
Emissions	Stage V
Max Power	11 kW
Fuel Consumption	1.4 l/hr
Vacuum Prime	85 m ³ /h (50 CFM)
Vacuum Lift	8.5 m (27 Ft)
Dimensions L x W x H	1700 mm X 1150 mm X 1700 mm

PUMP PERFORMANCE CURVE



PUMP: DRY PRIME CENTRIFUGAL



Pump Type: Cornell 4408T
Max Flow: 200 m³/hr
Max Head: 20.8 m
Solids Handling: 76 mm (3")
Pump Casting: Ductile Iron
Impeller: Ductile Iron
Impeller Type: Open 2 blades
Pump Shaft: Stainless Steel 17-4PH
Priming system: Mechanically Driven Diaphragm Style
Air Removal Float Box: Single chamber with positive sealing air separation. Stainless steel float ball and linkage.
Discharge Check Valve: Swing check type

ENGINE



Engine Brand: Hatz
Engine Type: 1D90E
Gross Power: 11 kW
Displacement:
Number of Cylinders: 1
Cooling System: Air Cooled
Exhaust Emission: Stage V
Service intervals: 500 Hrs

CONTROLS



Auto Start/Stop System
Switch OFF / NO / START
Tachometer
Hour Counter
Warning Lights "Oil and Engine Temperature"
Warning Light "Auto Stand-by"
GPRS – Impellr Web supervisor & APP
Geolocation and Geo-fencing
Two Float Switches (Man/Max Level) Support for Automatic Operation
2 Emergency Stop buttons
Bund level sensor

DRY PRIME SURFACE DEWATERING PUMP RANGE

IMP4D-11-CH



Diesel 11 Kw 4" Dry Prime Surface Pumps

Max Flow	Max Head	BEP Flow	BEP Head	Solids Handling	Engine
200 m3/hr	20.8 m	156 m3/hr	12.4 m	76 mm	Hatz 11 Kw

IMP4D-11-CH



Diesel 18.5 Kw 4" Dry Prime Surface Pumps

Max Flow	Max Head	BEP Flow	BEP Head	Solids Handling	Engine
237 m3/hr	29.5 m	158 m3/hr	21 m	76 mm	Hatz 18.5Kw

IMP6D-18.5-CH



Diesel 18.5 Kw 6" Dry Prime Surface Pumps

Max Flow	Max Head	BEP Flow	BEP Head	Solids Handling	Engine
450 m3/hr	24.5 m	340 m3/hr	16.25 m	76 mm	Hatz 18.5Kw

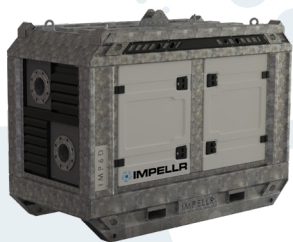
IMP4E-15-CH



Electric 15 Kw 4" Dry Prime Surface Pumps

Max Flow	Max Head	BEP Flow	BEP Head	Solids Handling	Engine
197 m3/hr	22 m	160 m3/hr	16 m	76 mm	15 Kw 4 pole

IMP6E-18.5-CH



Electric 18.5 Kw 6" Dry Prime Surface Pumps

Max Flow	Max Head	BEP Flow	BEP Head	Solids Handling	Engine
420 m3/hr	22 m	350 m3/hr	14 m	76 mm	18.5 Kw 4 pole

Trailer Options

