

DRY-PRIMING 6" SURFACE PUMP - IMP6D-18.5-CH

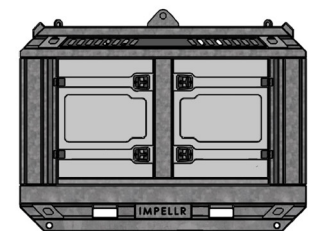
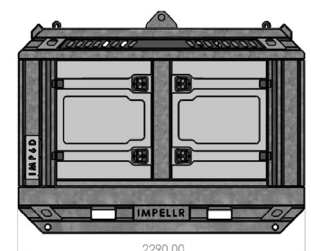
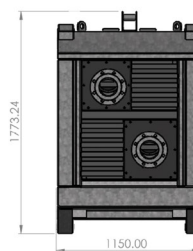
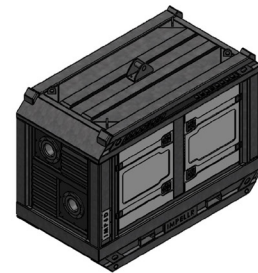


FLOW @ BEP: 250 M3/HR | HEAD @ BEP: 15 M

The IMPELLR surface pumps are designed for heavy industrial site water dewatering with many features to make the rental of the equipment a success.

Ideal for construction, utilities, disasters, mining, and quarrying where water need to be moved quickly.

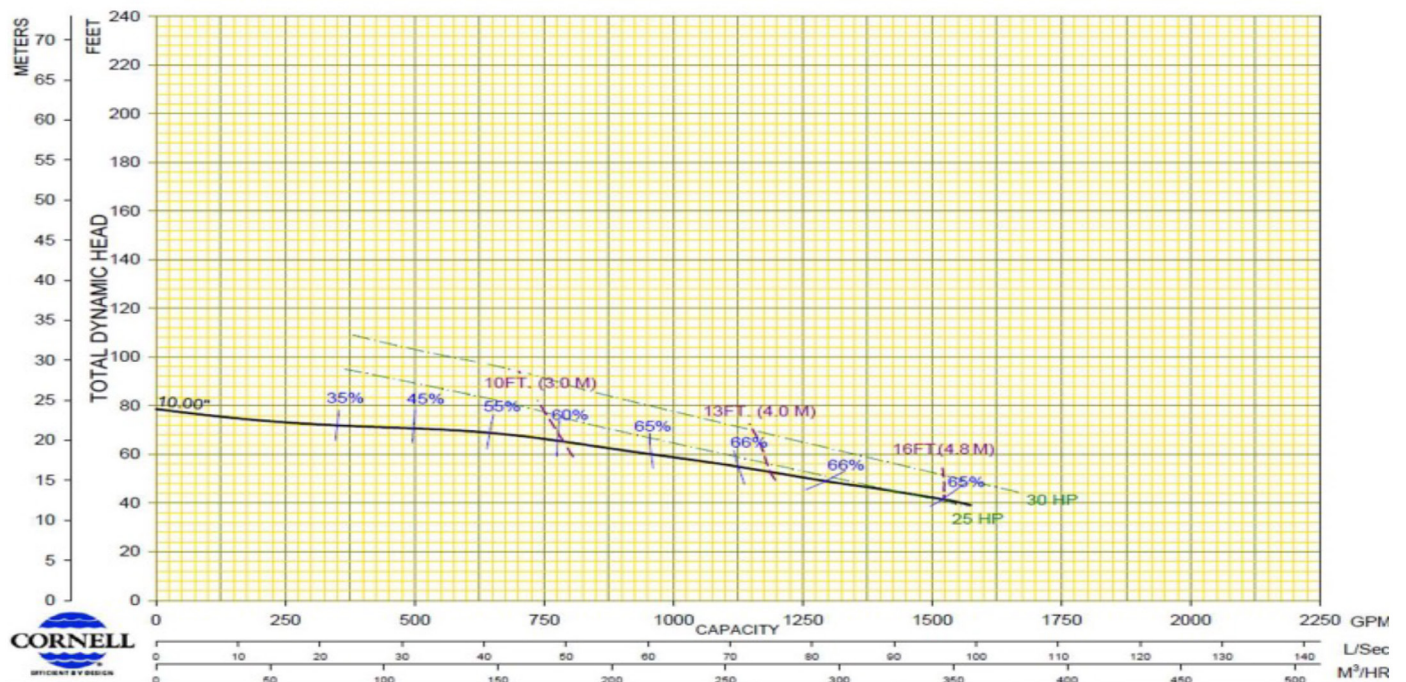
- Full load lifting eyes and stacking frame for neat and compact storage.
- Heavy-duty galvanised frame that will protect engine, pump, and controls in harsh environments.
- Diesel units fitted with Stage V engines that can run on ultra-low sulphur and standard diesel.
- Simple to use controls with remote monitoring.



TECHNICAL DATASHEET

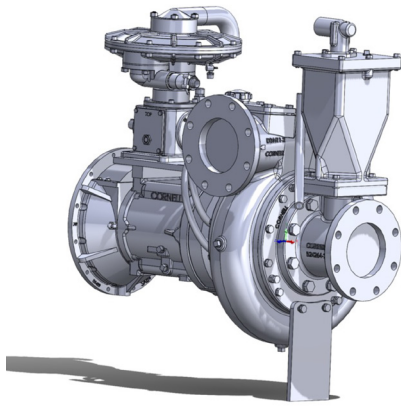
Pump specifications:	IMP6D-18.5-CH
Max Flow	350 m3/hr
Max Closed Head	24 mtrs
Max operating Head	22.5 mtrs
Best Efficiency	66%
BEP Flow	250 m3/hr / 15 mt
Suction / Discharge	6" (DN150) / 6" (DN150)
Solids Handling	76 mm
Impeller Type	Channel
Speed	1200 – 1800 RPM
Motor / Engine	Hatz 3H50T
Emissions	Stage V
Max Power	18.5 kW
Fuel Consumption	6.5 l/hr
Vacuum Prime	85 m3/h (50 CFM)
Vacuum Lift	8.5 m (27 Ft)
Dimensions	2300mm x 1150mm x 1800mm

PUMP PERFORMANCE CURVE



TECHNICAL DATASHEET

PUMP: DRY PRIME CENTRIFUGAL



Pump Type: Cornell 6612CP
Max Flow: 350 m³/hr
Max Head: 24 m
Solids Handling: 76 mm (3")
Pump Casting: Ductile Iron
Impeller: Ductile Iron
Impeller Type: Open 2 blades
Pump Shaft: Stainless Steel 17-4PH
Priming system: Mechanically Driven Diaphragm Style
Air Removal Float Box: Single chamber with positive sealing air separation. Stainless steel float ball and linkage.
Discharge Check Valve: Swing check type

ENGINE



Engine Brand: Hatz
Engine Type: 3H50T
Gross Power: 18.5 Kw
Number of Cylinders: 3
Cooling System: Water Cooled
Exhaust Emission: Stage V
Service intervals: 500 Hrs

CONTROLS



Auto Start/Stop System
Switch Manual – OFF / ON / START
Tachometer
Hour Counter
Warning Lights "Oil and Engine Temperature"
Warning Light "Auto Stand-by"
GPRS – Impellr Web supervisor & APP
Geolocation and Geo-fencing
Soot / Ash Filter Control
Two Float Switches (Man/Max Level) Support for Automatic Operation.
2 Emergency Stop buttons
Bund level sensor

DRY PRIME SURFACE DEWATERING PUMP RANGE

IMP4D-11-CH



Diesel 11 Kw 4" Dry Prime Surface Pumps

Max Flow	Max Head	BEP Flow	BEP Head	Solids Handling	Engine
200 m3/hr	20.8 m	156 m3/hr	12.4 m	76 mm	Hatz 11 Kw

IMP4D-11-CH



Diesel 18.5 Kw 4" Dry Prime Surface Pumps

Max Flow	Max Head	BEP Flow	BEP Head	Solids Handling	Engine
237 m3/hr	29.5 m	158 m3/hr	21 m	76 mm	Hatz 18.5Kw

IMP6D-18.5-CH



Diesel 18.5 Kw 6" Dry Prime Surface Pumps

Max Flow	Max Head	BEP Flow	BEP Head	Solids Handling	Engine
450 m3/hr	24.5 m	340 m3/hr	16.25 m	76 mm	Hatz 18.5Kw

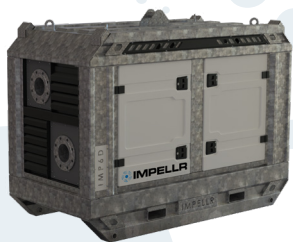
IMP4E-15-CH



Electric 15 Kw 4" Dry Prime Surface Pumps

Max Flow	Max Head	BEP Flow	BEP Head	Solids Handling	Engine
197 m3/hr	22 m	160 m3/hr	16 m	76 mm	15 Kw 4 pole

IMP6E-18.5-CH



Electric 18.5 Kw 6" Dry Prime Surface Pumps

Max Flow	Max Head	BEP Flow	BEP Head	Solids Handling	Engine
420 m3/hr	22 m	350 m3/hr	14 m	76 mm	18.5 Kw 4 pole

Trailer Options

