

DRY-PRIMING 6" SURFACE PUMP - IMP6E-18.5-CH

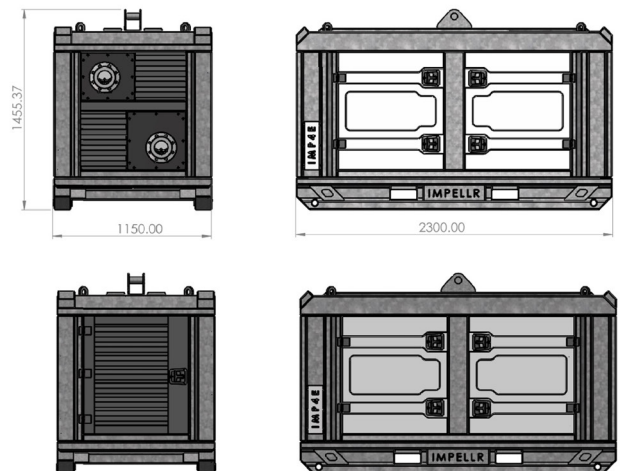
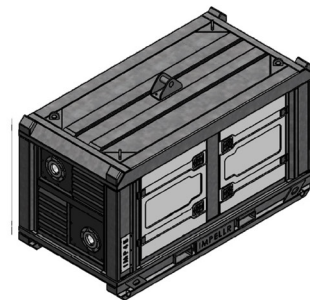


FLOW @ BEP: 250 M3/HR | HEAD @ BEP: 15 M

The IMPELLR surface pumps are designed for heavy industrial site water dewatering with many features to make the rental of the equipment a success.

Ideal for construction, utilities, disasters, mining and quarrying where water need to be moved quickly.

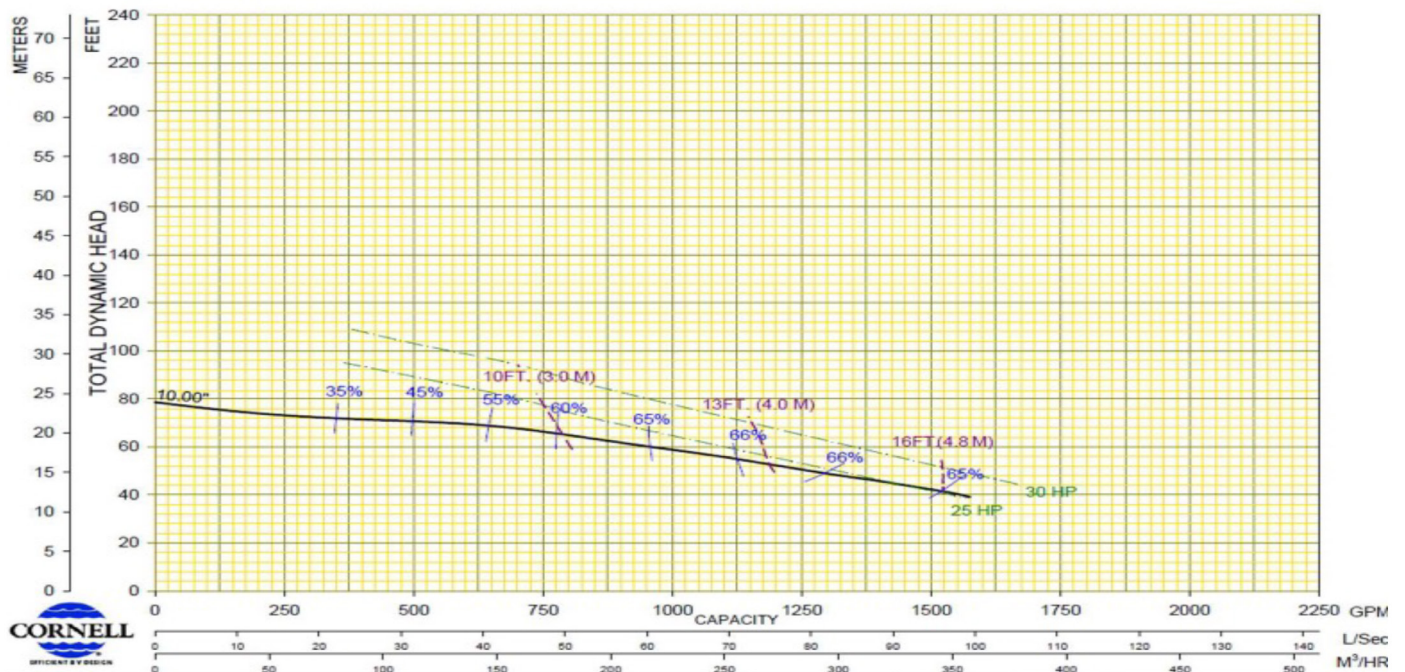
- Full load lifting eyes and stacking frame for neat and compact storage.
- Heavy-duty galvanised frame that will protect motor, pump, and controls in harsh environments
- Simple to use controls with remote monitoring options.



TECHNICAL DATASHEET

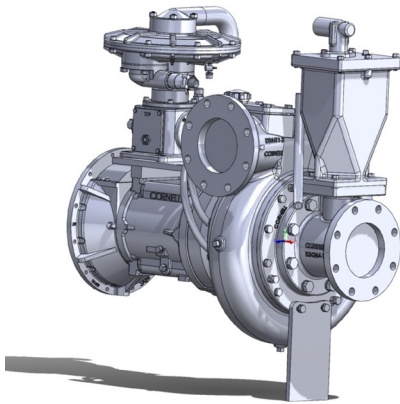
Pump specifications:	IMP6E-18.5-CH
Max Flow	350 m3/hr
Max Closed Head	24 mtrs
Max Operating Head	19.5 mtrs
Best Efficiency	66%
BEP Flow / Head	250 m3/hr / 15 m
Suction / Discharge	6" (DN150) / 6" (DN150)
Solids Handling	75 mm
Impeller Type	Channel
Speed	1200 - 1700 RPM
Motor	18.5 kw _ 4 pole 50 Hz 400 volt
Vacuum Prime	85 m3/h (50 CFM)
Vacuum Lift	8.5 m (27 Ft)
Dimensions L x W x H	2300 mm X 1150 mm X 1460 mm

PUMP PERFORMANCE CURVE



TECHNICAL DATASHEET

PUMP: DRY PRIME CENTRIFUGAL



Pump Type: Cornell 6612CP
Max Flow: 350 m³/hr
Max Head: 24 m
Solids Handling: 76 mm (3")
Pump Casting: Ductile Iron
Impeller: Ductile Iron
Impeller Type: Open 2 blades
Pump Shaft: Stainless Steel 17-4PH
Priming system: Mechanically Driven Diaphragm Style
Air Removal Float Box: Single chamber with positive sealing air separation. Stainless steel float ball and linkage.
Discharge Check Valve: Swing check type

ENGINE



Motor Brand: WEG
Gross Power: 18.5 kW
Power Requirements: 32 amp 3 phase 415V
1200-1700 RPM VFD

CONTROLS



Auto Start/Stop System
Switch Manual – 0 – Automatic
Tachometer
Hour Counter
Warning Lights "Oil and Engine Temperature"
Warning Light "Auto Stand-by"
GPRS – Impellr Web supervisor & APP
Geolocation and Geo-fencing
Soot / Ash Filter Control
Two Float Switches (Man/Max Level) Support for Automatic Operation

DRY PRIME SURFACE DEWATERING PUMP RANGE

IMP4D-11-CH



Diesel 11 Kw 4" Dry Prime Surface Pumps

Max Flow	Max Head	BEP Flow	BEP Head	Solids Handling	Engine
200 m3/hr	20.8 m	156 m3/hr	12.4 m	76 mm	Hatz 11 Kw

IMP4D-11-CH



Diesel 18.5 Kw 4" Dry Prime Surface Pumps

Max Flow	Max Head	BEP Flow	BEP Head	Solids Handling	Engine
237 m3/hr	29.5 m	158 m3/hr	21 m	76 mm	Hatz 18.5Kw

IMP6D-18.5-CH



Diesel 18.5 Kw 6" Dry Prime Surface Pumps

Max Flow	Max Head	BEP Flow	BEP Head	Solids Handling	Engine
450 m3/hr	24.5 m	340 m3/hr	16.25 m	76 mm	Hatz 18.5Kw

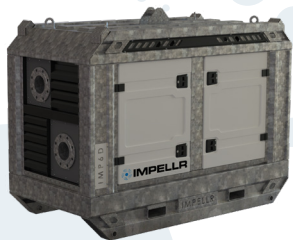
IMP4E-15-CH



Electric 15 Kw 4" Dry Prime Surface Pumps

Max Flow	Max Head	BEP Flow	BEP Head	Solids Handling	Engine
197 m3/hr	22 m	160 m3/hr	16 m	76 mm	15 Kw 4 pole

IMP6E-18.5-CH



Electric 18.5 Kw 6" Dry Prime Surface Pumps

Max Flow	Max Head	BEP Flow	BEP Head	Solids Handling	Engine
420 m3/hr	22 m	350 m3/hr	14 m	76 mm	18.5 Kw 4 pole

Trailer Options

